

DATE	SYM	REVISION RECORD	AUTH	DR

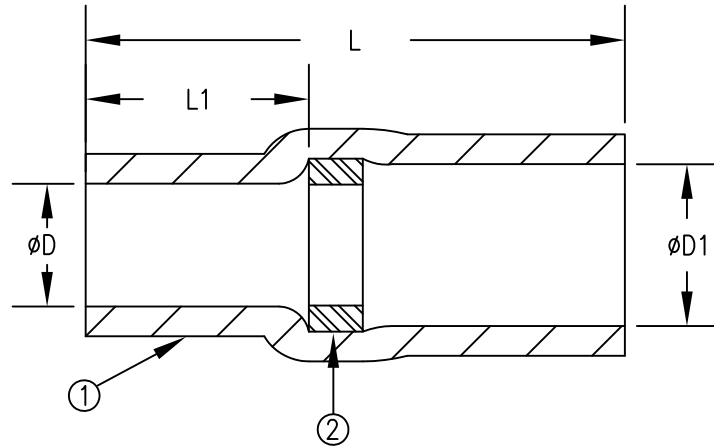


TABLE I: PRODUCT DETAILS

SUMITOMO PART NUMBER	L $\pm .025$	L1 $\pm .020$	ϕD MINIMUM	$\phi D1$ MINIMUM
E-C-112-01	.290	.120	.060	.082

MATERIALS:

- ① INSULATION SLEEVE:
HEAT-SHRINKABLE, RADIATION CROSSLINKED, MODIFIED POLYVINYLIDENE FLUORIDE.
COLOR = TRANSPARENT BLUE.
- ② SOLDER PREFORM:
ALLOY - Bi58 EUTECTIC AT 138°C. PER ANSI-J-STD-006.
FLUX - ROL1 TYPE RMA FLUX FOR SILVER OR TIN APPLICATIONS. PER ANSI-J-STD-004.

NOTES:

1. PLEASE REFER TO THE SUMITOMO ELECTRIC STS INSTALLATION GUIDE FOR RECOMMENDED ASSEMBLY INFORMATION.
2. TEMPERATURE RANGE: -55°C TO +125°C.



DIMENSIONS ARE IN INCHES TOLERANCES: (EXCEPT AS NOTED)			
LINEAR 0.0 = N/A 0.00 = N/A 0.000 = N/A	ANGULAR 0° = N/A 0°0' = N/A 0°00' = N/A		
An STS PRODUCT		TITLE: SOLDER TERMINATION SLEEVE	
DRAWN S. MELCHER	11-14-07	DRAWING NUMBER: E-C-112-01	REV -
APPROVED Jon M. Mills	11-14-07	SCALE: NONE	CAD NO. E-C-112-01
OTHER REF.	ORIG. DATE 11-14-07	SHEET 1 OF 1	